

**SAMSON CREE NATION – MATRIX SOLUTIONS INC.  
PARTNERSHIP**

**ABORIGINAL CONSTRUCTION MONITORING**

**WEEKLY REPORT**

**SPREAD 2**

**DECEMBER 10<sup>TH</sup> - DECEMBER 15<sup>TH</sup>**

## **1. PURPOSE OF THIS REPORT**

The report is a weekly summary of the daily reports submitted by the Aboriginal Monitors that are working on spread two. The social and cultural findings have been tabulated with locations and mitigation measures below. A summary of the construction activities has been summarized for December 10<sup>th</sup> – December 15<sup>th</sup>, 2018.

### Social and Cultural Features

Field Observation	# of occurrences	Description and Mitigation Measures	Mitigation Status	Further Action Required (Yes/No)
Traditional Use Area (hunting, fishing, gathering, trapping)	No Occurrence			
Rock Formations (rocks of significance, tipi rings, etc.)	No Occurrence			
Artifacts	No Occurrence			
Bones	No Occurrence			
Potential Gravesites	No Occurrence			

### Environmental Features

Field Observation	# of occurrences	Description and Mitigation Measures	Mitigation Status	Further Action Required (Yes/No)
Medicinal or Cultural Plants	No Occurrence			
Aquatic Life	No Occurrence			
Animal Observations or Burrows	No Occurrence			

Bird Nests	No Occurrence			
Trees (Red Willow)	No Occurrence			
Wetlands	No Occurrence			
Watercourse Crossing	No Occurrence			

### **Additional Observations and Summary of Activities or Concerns**

Attended daily safety meetings and discussed daily scopes each morning with the Contractor Liaison Dean Pooyak, and/or the Senior Construction monitor Drayton Kasokeo.

Weekly activities included spot-checking km: 165,206,208-211, 213,229,230,235,236, 237,242, 243,245,249,250,253,254,255,257,259,260,262,265,266; and shoofly 129-133,146,149,150,151,153,155,156,158,159,161-166,168,170.

On December 10, the daily safety theme was to watch for congestion at tie-in points. The weather forecast was partly cloudy. At SF 161, the tie-in backfill crew were working in the Native Prairie backfilling the tie-in ditch. Extra precautions were taken as the crew shaded the rocky soils. At SF 163, tie-in backfill crew were working on the east side, the mainline was shaded, and dirt was being bulked on the ditch line to build the roach. At SF 164, the crew was shading and backfilling on the east side of Highway 4. At SF 168, tie-in backfill crew were working on both sides.

December 11, the daily safety theme was watch out for fog, as there was a heavy fog advisory in effect. The weather forecast was foggy. At SF 146, the mechanical clean crew was levelling roach and removing the access ramp across the water drainage (km 230+065). At SF 149, the crew was removing the south half of the access ramps on the west and east side of Highway 31. At SF 150, the dozer was starting to rebuild the natural grade between km 235+146 to 235+300. On the east side, the dozer and excavator were pulling cut soil from the south side of the ROW, and using it to rebuild the natural grade. At SF 162, crew were crossing equipment, track hoes were shading pipe, and dozer was moving dirt. At SF 163, track hoes and dozers were moving dirt. At SF 164, track hoes were backfilling the tie-in section, dozer was moving dirt, and 5 track hoes and dozers were moving dirt at km 259+050. At SF 165, crew was working at the tie-in section, crew was cleaning the ditch, and the mechanic was on location. At SF 166, the grader was levelling off the ROW, and crew was prepping to move equipment. At SF 168, Medcor was onsite, mechanic was servicing equipment, crews were cleaning up, breaking down equipment and loading equipment.

December 12, the daily safety theme was situational awareness. The weather forecast was cloudy. The mechanical cleaning crew were working from SF 129 to 132. They were pulling soil away from the transition and spreading the cut soil on the ROW to rebuild the natural grade. They were also cleaning up garbage. At SF 151, the mechanical clean crew were working on the grade. At SF 155, crew was cleaning up on the ROW and equipment was crossing. At SF 162, track hoes were moving dirt, grader was levelling the ROW, and track hoe and dozer were moving dirt. At SF 163, track hoes were moving dirt. At SF 164, track hoes and dozers were moving dirt, grader was levelling, and gravel truck was dumping sand. At SF 168, the dozer was levelling, crew was cleaning up tracks on the track hoe, Medcor was onsite, and the mechanic was servicing equipment.

December 13, the safety theme was do not become complacent with the changing weather conditions. The weather forecast was cloudy. The mechanical clean crew was

working between SF 130 and 131; dozers were doing a rough grade with dozers and graders finishing behind. At SF 132 and 133, the mechanical clean crew were pulling sub soil away from transitions, and bulking it on the ditch line. At SF 149, crew finished removing the access approaches. The back end crew was working between SF 150 and 151, pulling the access ramp at km 135+300, and finishing the final natural grade. At SF 153, the frontend mechanical clean crew were pulling sub soil away from transitions and putting the cut soil on the ditch line. At SF 156, 163, and 164, track hoe was moving dirt. At SF 158, hydro vac and backhoe were working, and crews were cleaning off at the wash bay. At SF 161 and 164, dozer was levelling off the ROW. At SF 165, hoarding at the valve site was noted. At SF 168, crew was cleaning up equipment, Medcor services were on location and the mechanic was servicing equipment. At SF 170, the fuel truck was fuelling equipment.

December 14, the safety theme was to keep your mind on tasks at hand. The weather forecast was sunny with fog. At SF 133, track hoe and dozer was moving dirt, and track hoes were levelling the ROW. At SF 151, the mechanical clean up crew were removing the access ramp and prepping drainage for the spring. At SF 155, the dozer and the excavator were starting to remove the ramp at the wetland. At SF 159, the mechanical clean up crew were working on the west side and removing snow from the ditch line and away from sub soil, they were trying to rebuild the natural grade. At SF 161, the bridge at Eagle Creek was being removed. At SF 162, the dozer was back blading on the ROW, track hoe was working on the bridge, and crews were dismantling the bridge. At SF 168, crews were loading equipment, Medcor was on location, mechanic was servicing equipment, and picker was loading boom sticks.

December 15, the safety theme was to be aware of the Chinnok winds, as they are wreaking havoc on the roads causing slippery conditions. The weather forecast was sunny with wind. At SF 131, the mechanical clean up crew was busting lumps of sub soil, and doing the final levelling of the natural grade. At SF 132, dozer was moving dirt, and track hoe was levelling the ROW. At SF 133, dozer was moving dirt, fuel truck was fuelling equipment, Medcor was noted, equipment was crossing and grader was levelling the ROW. At km 213+250 and 500, track hoe and dozer were moving dirt. At SF 151, track hoe and dozer were moving dirt. At SF 162, crews were removing the bridge, track hoe was moving dirt, dozer was pushing dirt away from the bridge, crew was cleaning up and welder was noted.

The location of these features was documented and photos were collected (see below). No additional cultural or environmental features were observed within the scanned areas.



## Photos of Sites Visited & Topics Discussed This Week



Tie-in backfill on the west side of Highway 4 - Dec 10, 2018



Excavator using skeleton bucket to backfill – Dec 10, 2018



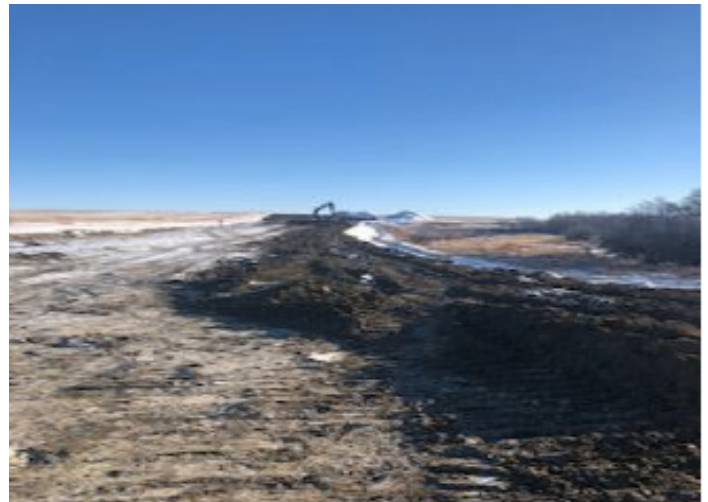
Backfill – km 259+300 – Dec 11, 2018



Shading and backfill – km 255+450 - Dec 11, 2018



Clean up crew removing access ramp – km 230+065 – Dec 11, 2018



Excavator pulling soil from the ROW — Dec 11, 2018



Moving dirt – km 265+120 – Dec 12, 2018



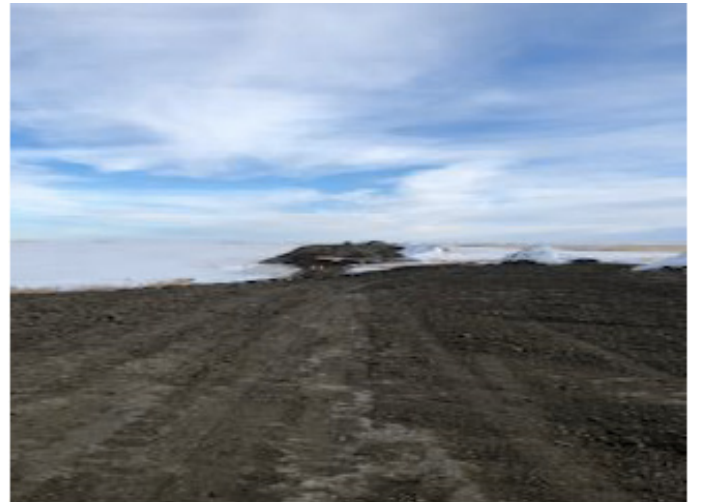
Moving dirt – km 255+000 - Dec 12, 2018



Mechanical clean crew – km 235+146 & 236+150 – Dec 12, 2018 Excavators pulling soil for dozer– km 206+400 – Dec 12, 2018



Natural grade after crew put soil back – SF 129 – Dec 13, 2018



Natural grade and removal of access ramp – Dec 13, 2018





Hoarded in valve site – km 260+400 – Dec 13, 2018



Moving dirt – km 209+780– Dec 13, 2018



Excavator removing ramp at Eagle Creek – km 255+100 – Dec 14, 2018



Crew prepping for drainage– km 235+600 – Dec 14, 2018



Bridge removal – km 255+300– Dec 14, 2018



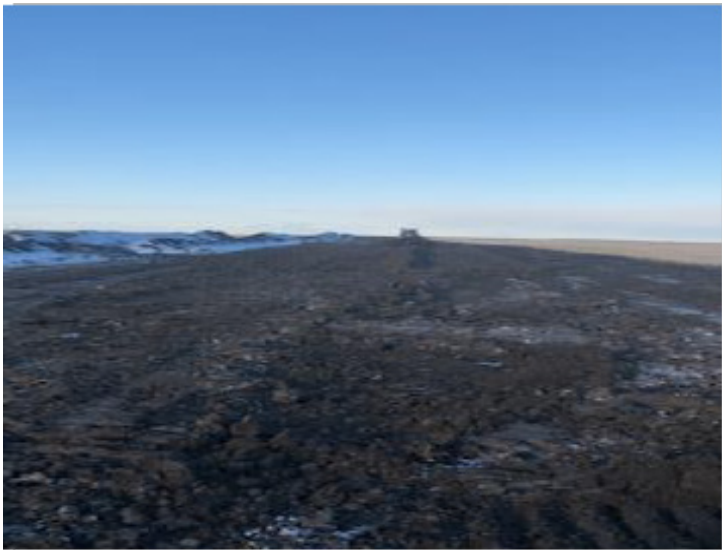
Moving dirt – km 236+700– Dec 14, 2018



Moving dirt – km 211+400 – Dec 15, 2018



Ramps removed from bridge – km 255+200– Dec 15, 2018

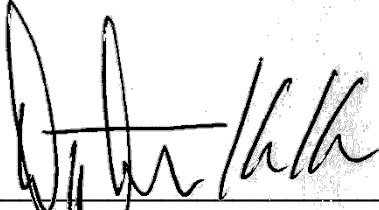


Dozer working soil – km 209+400 – Dec 15, 2018



Mechanical clean up crew clearing snow – km 213+700 – Dec 15, 2018

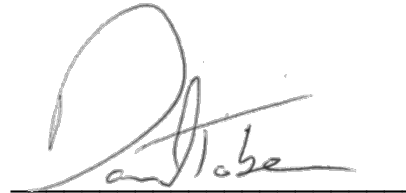
## APPROVALS



Drayton Kasokeo  
Senior Construction Monitor

December 20, 2018

Date



Daniel Tober  
Senior Environmental Scientist

December 20, 2018

Date